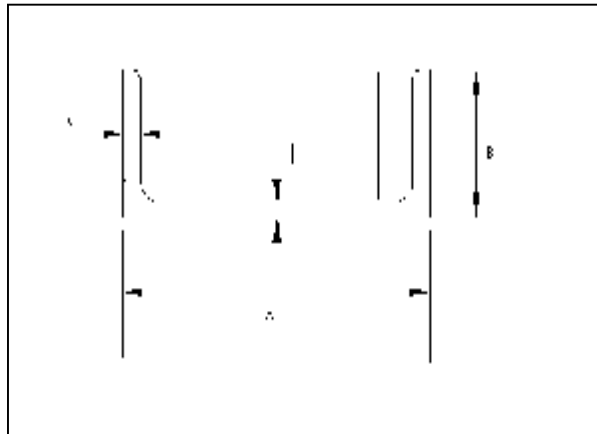


PARALLEL FLANGE CHANNELS TO BS EN 10279

SECTION DESIGNATION IN MM	MASS PER METRE KG/M	DEPTH OF SECTION MM (A)	WIDTH OF SECTION MM (B)	THICKNESS	
				WEB MM (t)	FLANGE MM (s)
300 x 100 *	46	300	100	9	17
300 x 90 *	41	300	90	9	16
260 x 90	35	260	90	8	14
260 x 75	28	260	75	7	12
230 x 90	32	230	90	8	14
230 x 75	26	230	75	7	13
200 x 90	30	200	90	7	14

* Maximum length 13 metres.



TAPER FLANGE CHANNELS TO DIN 1026

THIS SECTION IS NOT OFFERED TO THE EXPORT MARKET

SECTION DESIGNATION MM	MASS PER METRE KG/M	DEPTH OF SECTION MM (h)	WIDTH OF SECTION MM (b)	THICKNESS	
				WEB MM (t)	FLANGE MM (s)
200 x 75	25	200	75	9	12

